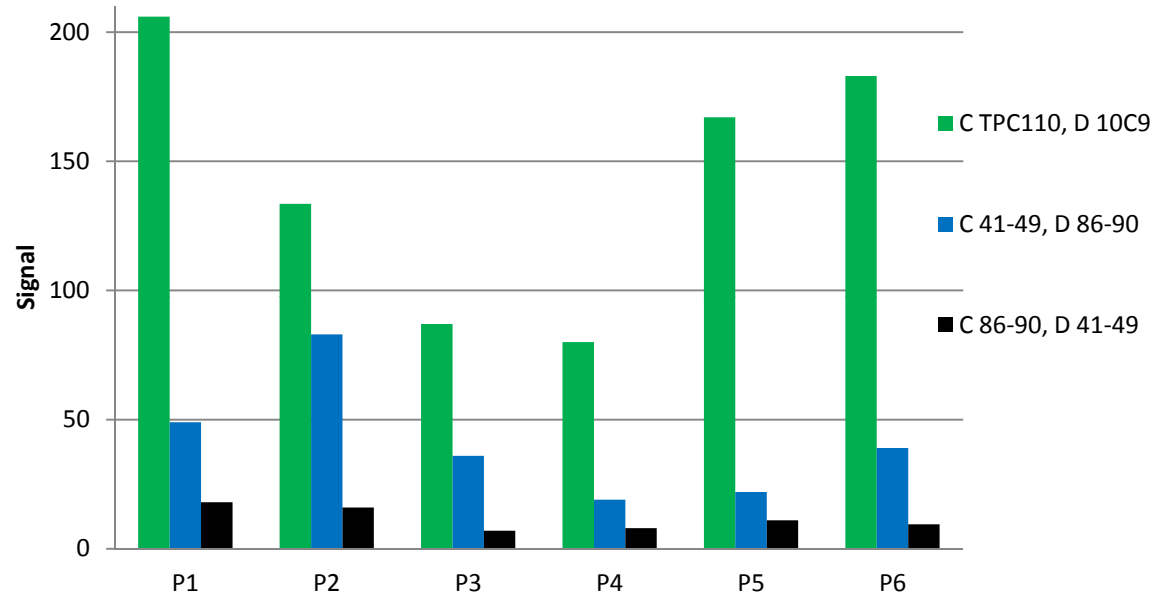


# Sensitive Cardiac Troponin I Antibody Pair from SDIX

- SDIX TPC110, currently one of the leading cardiac troponin I (cTnI) antibodies, targeting aa 24-40
- SDIX 10C9, new monoclonal antibody specific to cardiac troponin I (cTnI), targeting aa 41-60

*TPC110 capture 10C9 detection pair shows greater sensitivity compared to a commonly used competitor's pair (figure 1).*



Low cTnI positive patient samples (1-3 ng/mL)  
Figure 1\*. Pairs comparison in 6 patient samples

Catalog number	Description
D4160MA01-MA	SDIX 10C9, Protein A purified
B9085MA06-MA	SDIX TPC110, Protein A purified
B9085MD09-MD	SDIX TPC110, DEAE purified

\* Note: Graphs based on unpublished internal data

*Request Free Test  
Sample Today!*

Your Antibody Partner – Innovating to a Healthier Tomorrow

1(800)544-8881

sales@sdix.com

www.sdix.com



# Sensitive Cardiac Troponin I Antibody Pair from SDIX

- SDIX TPC110, currently one of the leading cardiac troponin I (cTnI) antibodies, targeting aa 24-40
- SDIX 10C9, new monoclonal antibody specific to cardiac troponin I (cTnI), targeting aa 41-60

*TPC110 capture 10C9 detection pair shows greater sensitivity (figures 2, 4) and the ability to detect low levels of cardiac troponin I (cTnI) in human patient samples (figures 3, 5)*

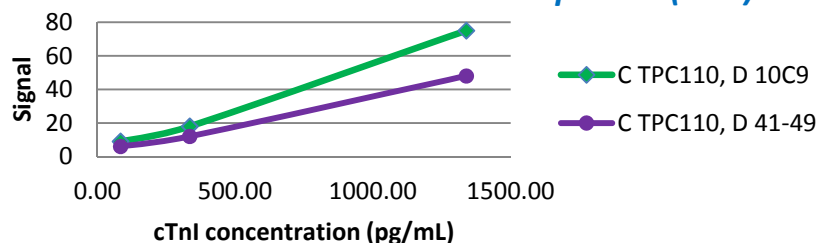


Figure 2\*. 10C9 detection compared to a leading competitor's detection antibody targeting aa 41-49 in serum titration

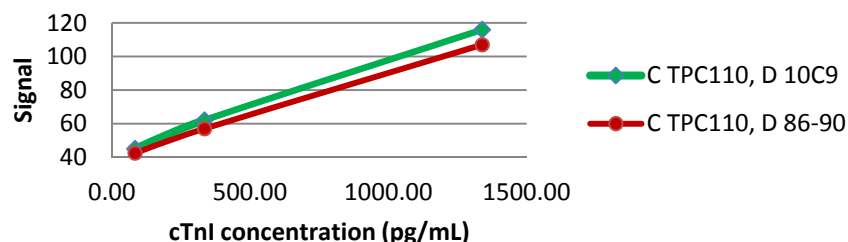


Figure 4\*. 10C9 detection compared to a leading competitor's detection antibody targeting aa 86-90 in serum titration

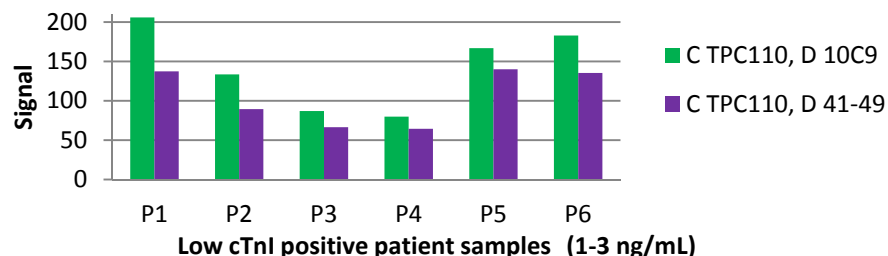


Figure 3\*. 10C9 detection compared to a leading competitor's antibody targeting aa 41-49 in 6 patient samples

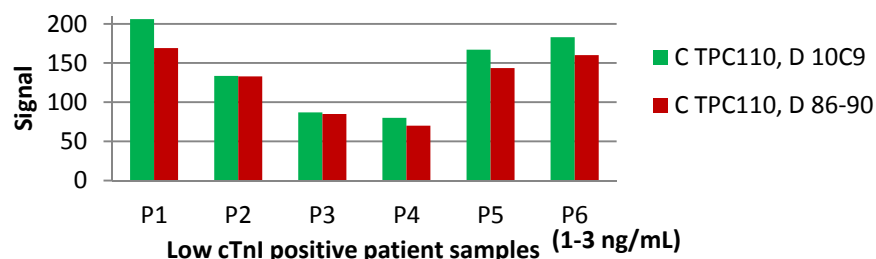


Figure 5\*. 10C9 detection compared to a leading competitor's antibody targeting aa 86-90 in 6 patient samples

Catalog number	Description
D4160MA01-MA	SDIX 10C9, Protein A purified
B9085MA06-MA	SDIX TPC110, Protein A purified
B9085MD09-MD	SDIX TPC110, DEAE purified

\* Note: Graphs based on unpublished internal data

*Request Free Test Sample Today!*

Your Antibody Partner – Innovating to a Healthier Tomorrow

1(800)544-8881

sales@sdix.com

www.sdix.com

