



SDI-LIB for environmental *Listeria*

SDI's *Listeria* Indicator Broth is inexpensive, quick and the easiest to use test in the marketplace.

Listeria Indicator Broth (LIB) from Strategic Diagnostics Inc. is currently the easiest to use test for the detection of *Listeria* species in the environment. Our system is a one step enrichment/detection system. Simply sample and enrich, watch for a color change to indicate the presence of *Listeria* in your processing environment. Results for most common *Listeria* species may be obtained in a minimum of 30 hours.

BENEFITS OF SDI-LIB FOR LISTERIA

- Prescreener
- No media to prepare
- One step
- Minimal training involved
- No special equipment required
- Contained system eliminates cross contamination
- Results in 30-48 hours
- Presumptive results for most *Listeria* spp within 30 hours



HOW SDI-LIB WORKS

The principle of the SDI-LIB system is based on colorimetric detection of *Listeria* spp using a unique blend of antibiotics, growth enhancers and a *Listeria* specific color indicator. A light brown to black color formation within 30 hours indicates presence of *Listeria* spp in an environmental samples. SDI-LIB has a limit of detection for most *Listeria* spp between (>1-100 CFU/mL). Simply sample your environment with a sponge/swab, and enrich by adding the media directly to the sample.

APPLICATIONS

The SDI-LIB is designed to detect *Listeria* species on environmental surfaces

PACKAGING

SDI-LIB is available in test kits of 100 tests. Swabs/Sponges are not included.



Ordering Information—*Listeria* Indicator Broth

Item	Description	Part Number
Test kit	1 x 25 Test units	250003-25
Test kit	4 x 25 Test units	250004-100
Test kit	1 x 100 Test units	250005-100

Also available:

RapidChek® for *Listeria*, RapidChek® for *E. coli* O157, RapidChek® for *Salmonella* and RapidChek® SELECT™ for *Salmonella*

Contact us: Phone: 1-800-544-8881
email: sales@sdix.com

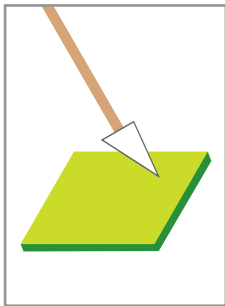
SDI-LIB for *Listeria* in the environment

Pathogen Screening Quick Reference

Read the user's guide instructions completely before performing any test.

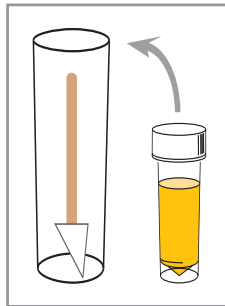
AOAC approved version

1



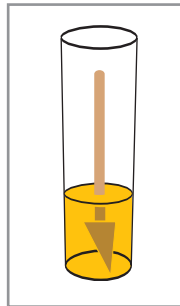
Take sample for analysis from a surface and return sponge to original container.

2



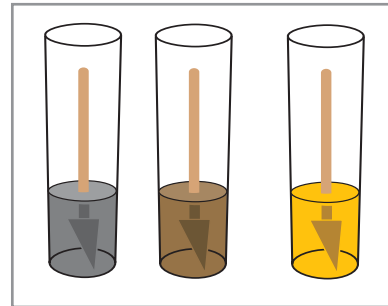
Aseptically add 20 mL of SDI-LIB and submerge sponge into container

3



Incubate at 37°C for 30-48 hours.

4



Monitor color change to determine result. Black or dark brown is presumptively positive. Yellow is negative.

Strategic Diagnostics Inc.
111 Pencader Drive
Newark, DE 19702 USA
Voice: 302-456-6789
Fax: 302-456-6782
Toll Free USA: 800-544-8881

